

Turbine Series - 900FH/1000FH

FUEL

Specifications: Diesel Applications

Height: 900FH: 16.5" (41.9 cm)
1000FH: 21.8" (55.4 cm)

Width: 5.96" (15.1 cm)

Depth: 5.96" (15.1 cm)
with Bracket 6.32" (16.1 cm)

Dry Weight: 900FH: 6.0 lbs (2.7 kg)
1000FH: 10 lbs (4.5 kg)

Ports: 7/8"-14 UNF-2B (SAE J1926)

Service Clearance (Top): 900FH: 5.0" (12.7 cm)
1000FH: 10.0" (25.4 cm)

Vacuum Installation Recommended

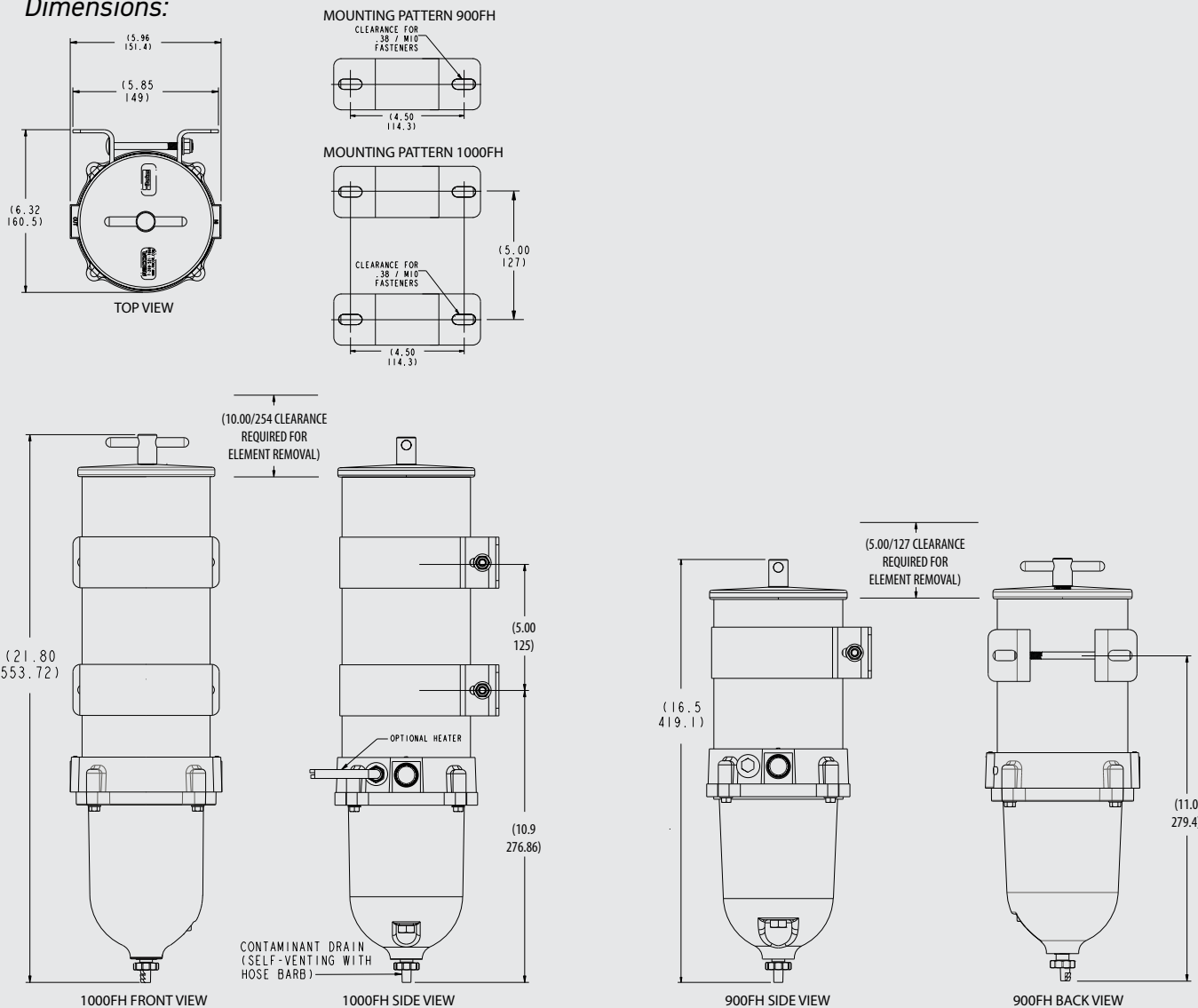
Maximum Head Pressure: 15 psi (1.03 bar)

Max Flow Rate: 900FH: 90 gph (341 lph)
1000FH: 180 gph (681 lph)

FH Model Superseded to FV Model.
See RSL0410 900-1000FV Cut Sheet
for available assemblies.

RACOR®

Dimensions:

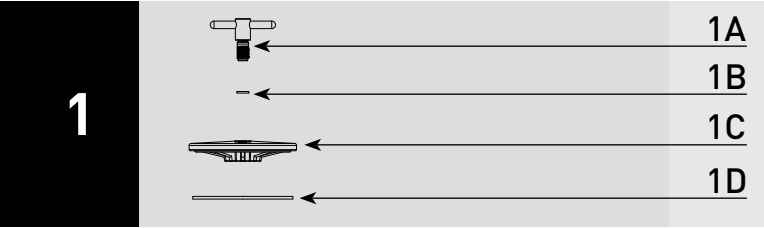


SINGLE ASSEMBLY

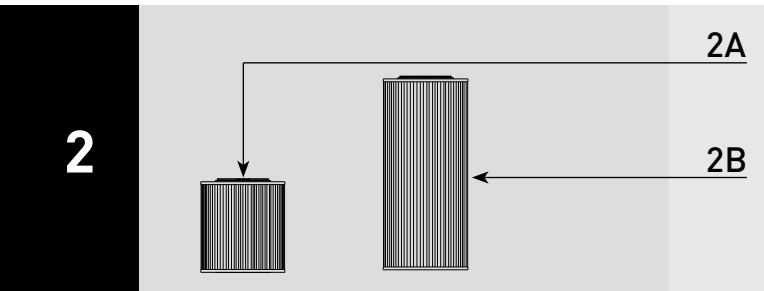


PARTS

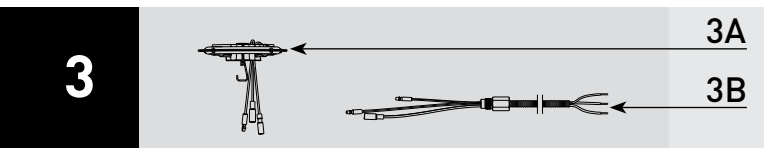
Turbine - 900FH/1000FH



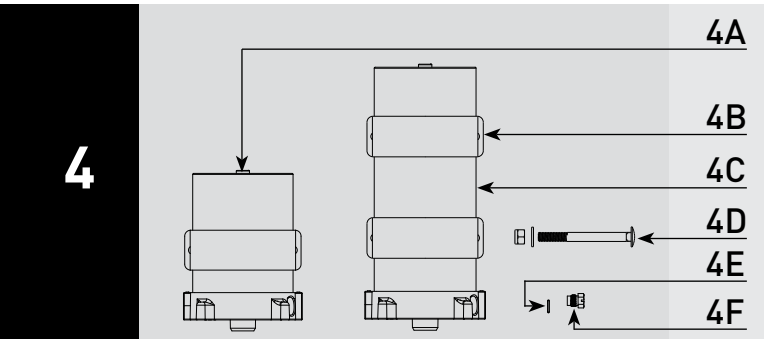
Part #	Description
1A	RK11-2076 T-handle/Lid Kit - Includes 1B, 1C & 1D
1B	T-handle O-ring - Included in 9A
1C	900FH/1000FH Lid
1D	Lid Gasket - Included in 7A



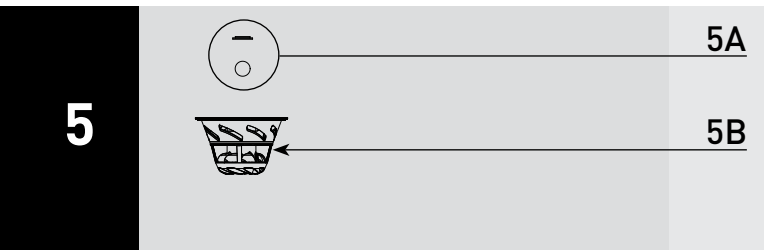
2A	2040V2 2040V10 2040V30	900FH Replacement Element 2 micron - Includes 1B & 1D 900FH Replacement Element 10 micron - Includes 1B & 1D 900FH Replacement Element 30 micron - Includes 1B & 1D
2B	2020V2 2020V10 2020V30	1000FH Replacement Element 2 micron - Includes 1B & 1D 1000FH Replacement Element 10 micron - Includes 1B & 1D 1000FH Replacement Element 30 micron - Includes 1B & 1D



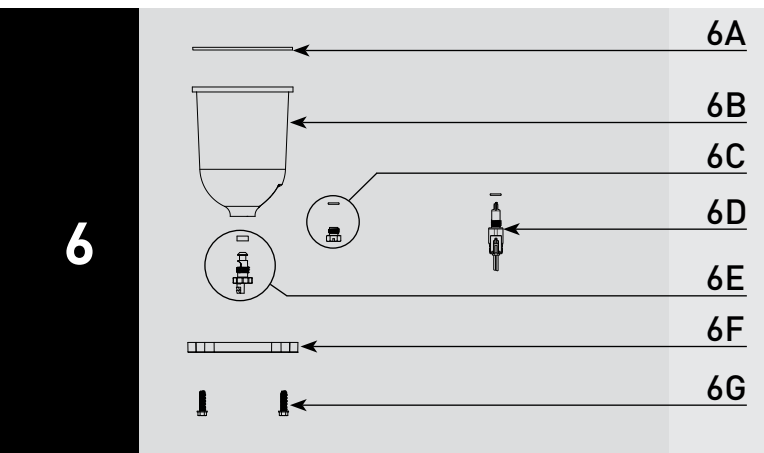
3A	RK11-2016 RK11-2015	Heater Kit - 12 vdc, 325 watt - Includes 1B, 1D & 3B <i>Heater Relay Kit Recommended - Customer Supplied</i> Heater Kit - 24 vdc, 325 watt - Includes 1B, 1D & 3B <i>Recommended RK 11862 Heater Relay Kit</i>
3B		3-wire Heater Feed-thru - Included in 3A



4A		900FH Body/Housing/Return Tube
4B	RK11-2005	Bracket Kit - Includes Bracket, Bolt, Washer, and Nut
4C		1000FH Body/Housing/Return Tube
4D		Bolt, Washer, and Nut
4E		Heater Feed-thru or Plug O-ring - Included in 7A
4F	RK 11-1679	Feed-thru Plug - Includes 4E



5A		Checkball and Gasket - Included in 7A
5B	RK11-2080	Centrifuge/Baffle/Checkball/Gasket Kit - Includes 5A & 6A



6A		Bowl Gasket - Included in 7A
6B	RK11-2081	Bowl Kit - Includes 6A, 6C, 6E, 6F & 6G
6C	RK 20126	Bowl Plug (O-ring Included in 7A)
6D	RK33802	WIF Probe Kit - 1/2"-20 UNF - Two Wire Pigtail Water Detection Module Required - Use 7C
6E		Self-venting Drain (Gasket Included in 7A)
6F		Bowl Ring Kit (FH - Tan) - Includes 6A & 6G
6G		Cap Screw Bowl Fasteners (set of 4)

Accessories and Parts Available - Not Shown

7A	RK 11-1952	Complete Seal Service Kit - 900FH/1000FH Series Filters
7B	RK19671 RK19669 RK19667	Stainless Steel T-handle and Vacuum Gauge Vacuum Gauge (30" Hg) - 3 needles: Theshold (red), Max Change Out (Red - Adjustable), Gauge (Black) Compound Gauge - pressure (15 PSI) and vacuum (30" Hg)
7C	RK 14329 RK 14321	Water Detection Module - 12 vdc Water Detection Module - 24 vdc
7D	RK30880E	WIF Sensor/Detection Kit - 1/2"-20 UNF
7E	RK11-1978	Checkball Spring Kit - Use with Primer Pump Kit 7F
7F	RKP1912 RKP1924	Primer Pump Kit - 12 vdc - <i>Adds 3.25" (8.26 cm) to Height</i> Primer Pump Kit - 24 vdc - <i>Adds 3.25" (8.26 cm) to Height</i>