

# Specifications:

## T100-B T100-P

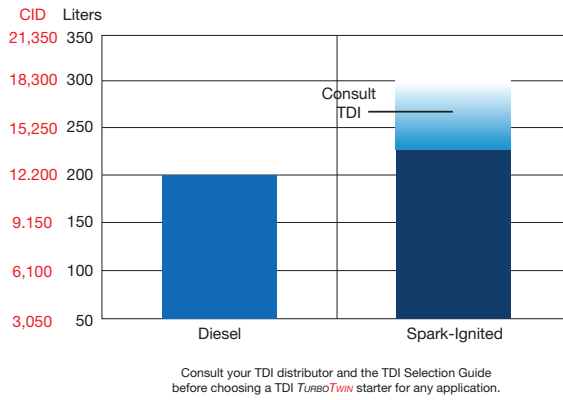
### TURBOTWIN™ Engine Air Starters

### The Most Popular T100 Configurations



TDI turbine designs feature larger air channels to optimize starting power.

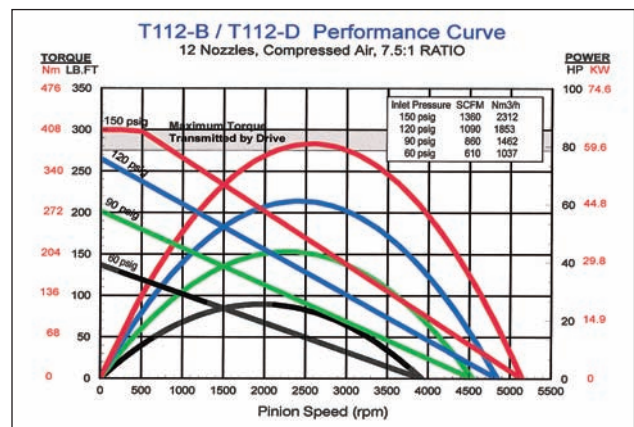
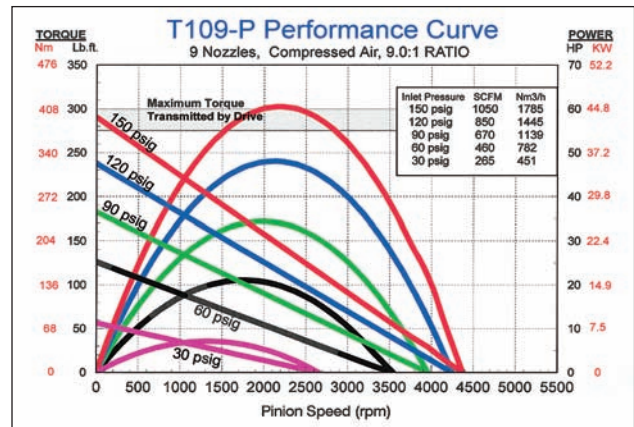
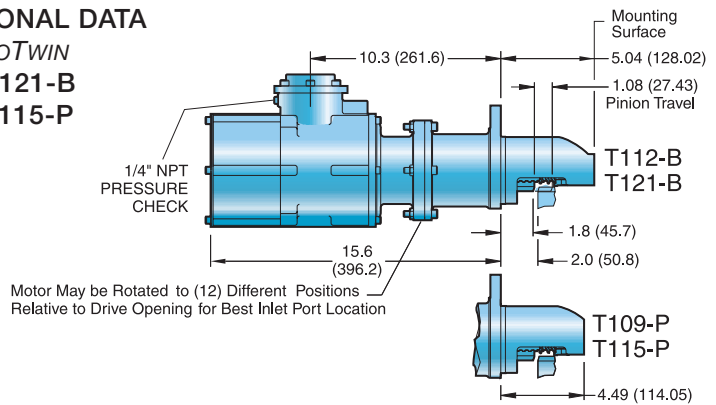
## Engine Displacement Chart For T100-B/D/P Series Air Starters



This selection chart shows basic starter capability by engine size. Note the chart shows four-stroke diesel engine size on the left and four-stroke, spark-ignited engine sizes on the right. Always consult TDI for application-specific capability.

### DIMENSIONAL DATA

TDI TURBOTWIN  
T112-B/T121-B  
T109-P/T115-P



For low-pressure version curve, see T121-D performance curve on page 10.

## SPECIFICATIONS

<b>Engines:</b>	Starts Engines from 50 (3000 CID) up to 250 Liters (15,000 CID)	<b>Rotation:</b>	(Facing Pinion Orientation) Righthand/clockwise and Lefthand/counter clockwise
<b>Design Configuration:</b>	Inline; Inertia-Engaged	<b>Air/Gas Supply:</b>	Compressed Air or Natural Gas
<b>Common Pinion Configuration:</b>	6/8 Pitch, 12 Tooth (2-inch pitch diameter pinion)	<b>Lubrication:</b>	Grease-Packed For Life, None Required
<b>Mounting:</b>	SAE 3 Mounting Flange	<b>Gear Ratio:</b>	
<b>Horsepower:</b>		<b>T112-B/T121-B:</b>	7.5:1
<b>T112-B:</b>	80 hp (60 kW) Cranking Power at 150 psig (10.3 BAR) Max.	<b>T109-P:</b>	9.0:1
<b>T121-B:</b>	80 hp (60 kW) Cranking Power at 90 psig (6.2 BAR) Max.	<b>Custom:</b>	Other models and configurations available. Consult your local TDI distributor.
<b>T109-P:</b>	60 hp (41 kW) Cranking Power at 150 psig (10.3 BAR) Max.		
<b>Weight:</b>	48 lbs. (22 kg)		

### Operating Pressure Range:

MODEL	NOZZLES	PSI	BAR
T109-P	9	30 – 150	2 – 10.3
T112-B	12	60 – 150	4.1 – 10.3
T121-B	21	30 – 90	2 – 6.2

For applications in the 30–90 psig (2.1–6.2 BAR) range, consult your TDI distributor for best nozzle configuration.

**FOR ENGINE COMPATIBILITY AND STARTER REPLACEMENT INFORMATION, SEE TABLE ON PAGE 31 OR CONSULT YOUR TDI DISTRIBUTOR.**

*T100-B/P's grease-packed for life feature eliminates wear, reduces maintenance, and delivers a significantly longer starting life.*

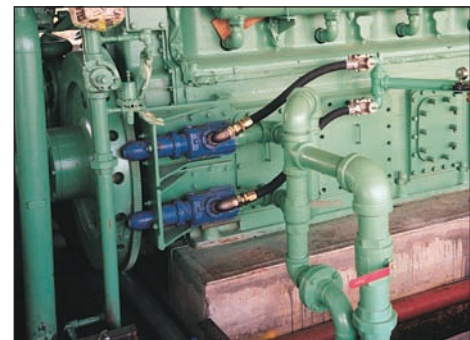
**Power and Reliability for Engines up to 300 Liters and Larger.**



*The TDI TurboTwin Starter Model T100-B offers simplicity and a perfect fit, even within the tightest installations.*



*Model T100-B outboard-mounted starter on a slow-speed spark-ignited engine.*



*T100-B dual starter mounted on a Worthington SL-10. Simple installation, power and reliability make the T100-B ideal for starting engines up to 300 liters.*