

OLYMPIAN™

GEP200-4

*Diesel Generator Set
Exclusively from your Cat® Dealer*



EU Stage II Emissions Compliant
Suitable for Mobile Applications in the European Community

Output Ratings

Generating Set Model	Prime*	Standby*
380-415V,50Hz	180.0 kVA 144.0 kW	200.0 kVA 160.0 kW
480V, 60 Hz	196.9 kVA 157.5 kW	218.8 kVA 175.0 kW

* Refer to ratings definitions on page 4.
Ratings at 0,8 power factor.

Technical Data

Engine Make & Model:	Perkins 1106C-E66TAG4	
Alternator Model:	LL5014F	
Base Frame Type:	Fbc2 - (08Hr)	
Circuit Breaker Type:	3 Pole MCCB	
Frequency:	50 Hz	60 Hz
Engine Speed: RPM	1500	1800
Fuel Tank Capacity: litres (US gal)	418 (110.4)	
Fuel Consumption, Prime: l/hr (US gal/hr)	39.7 (10.5)	44.4 (11.7)
Fuel Consumption, Standby : l/hr (US gal/hr)	43.5 (11.5)	48.6 (12.8)

Engine Technical Data

Physical Data	
Manufacturer:	Perkins
Model:	1106C-E66TAG4
No. of Cylinders/Alignment:	6 / In Line
Cycle:	4 Stroke
Induction:	Turbocharged Air To Air Charge Cooled
Cooling Method:	Water
Governing Type:	Electronic
Governing Class:	ISO 8528 G2
Compression Ratio:	16.2:1
Displacement: l (cu.in)	6.6 (402.8)
Bore/Stroke: mm (in)	105.0 (4.1)/127.0 (5.0)
Moment of Inertia: kg m ² (lb. in ²)	1.61 (5502)
Engine Electrical System:	
-Voltage/Ground:	12/Negative
-Battery Charger Amps:	10
Weight: kg (lb) - Dry:	788 (1737)
- Wet:	822 (1812)

Air System	50 Hz	60 Hz
Air Filter Type:	Paper Element	
Combustion Air Flow:		
m ³ /min (cfm)	-Standby: 11.7 (413)	13.4 (473)
	-Prime: 11.3 (399)	13.3 (470)
Max. Combustion Air Intake		
Restriction: kPa (in H ₂ O)	8.0 (32.1)	8.0 (32.1)
Radiator Cooling Air Flow:		
m ³ /min (cfm)	309.0 (10912)	385.0 (13596)
External Restriction to		
Cooling Air Flow: Pa (in H ₂ O)	125 (0.5)	125 (0.5)

Cooling System	50 Hz	60 Hz
Cooling System Capacity:		
l (US gal)	27.0 (7.1)	27.0 (7.1)
Water Pump Type:	Centrifugal	
Heat Rejected to Water & Lube Oil: kW (Btu/min)		
-Standby:	79.8 (4538)	89.5 (5090)
-Prime:	72.8 (4140)	82.2 (4675)
Heat Radiation to Room:		
kW (Btu/min)	-Standby: 13.7 (779)	15.7 (893)
	-Prime: 12.5 (711)	14.5 (825)
Radiator Fan Load: kW (hp)	6.3 (8.5)	14.7 (19.7)
Cooling system designed to operate in ambient conditions up to 50°C (122°F). Contact your local Olympian dealer for power ratings at specific site conditions.		

Lubrication system	
Oil Filter Type:	Spin-On, Full Flow
Total Oil Capacity l (US gal):	16.5 (4.4)
Oil Pan l (US gal):	15.5 (4.1)
Oil Type:	API CH4 / CI4 15W-40
Cooling Method:	Water

Performance	50 Hz	60 Hz
Engine Speed: RPM	1500	1800
Gross Engine Power: kW (hp)		
-Standby:	180.5 (242.0)	204.3 (274.0)
-Prime:	163.7 (220.0)	185.3 (248.0)
BMEP: kPa (psi)		
-Standby:	2188.0 (317.4)	2064.0 (299.4)
-Prime:	1985.0 (287.9)	1872.0 (271.5)
Regenerative Power: kW	8.8	14.9

Fuel System				
Fuel Filter Type:	Replaceable Element			
Recommended Fuel:	Class A2 Diesel			
Fuel Consumption: l/hr (US gal/hr)				
	110% Load	100% Load	75% Load	50% Load
Prime				
50 Hz	43.5 (11.5)	39.7 (10.5)	30.5 (8.1)	20.7 (5.5)
60 Hz	48.6 (12.8)	44.4 (11.7)	35.4 (9.4)	27.3 (7.2)
Standby				
50 Hz	43.5 (11.5)	33.7 (8.9)	23.0 (6.1)	
60 Hz	48.6 (12.8)	38.3 (10.1)	29.1 (7.7)	
(based on diesel fuel with a specific gravity of 0.85 and conforming to BS2869, Class A2)				

Exhaust System	50 Hz	60 Hz
Silencer Type:	Industrial	
Silencer Noise Reduction	SD100 (1)	
Pressure Drop Across		
Silencer System: kPa (in Hg)	2.14 (0.632)	0.54 (0.159)
Silencer Noise Reduction		
Level: dB	14	12
Max. Allowable Back		
Pressure: kPa (in. Hg)	15.0 (4.4)	15.0 (4.4)
Exhaust Gas Flow:		
m ³ /min (cfm)	-Standby: 19.4 (685)	24.4 (862)
	-Prime: 19.4 (685)	24.4 (862)
Exhaust Gas Temperature: °C (°F)		
m ³ /min (cfm)	-Standby: 453 (847)	466 (871)
	-Prime: 440 (824)	453 (847)

Alternator Performance Data

Data Item	50 Hz				60 Hz				
	415/240V	400/230V 230/115V 200/115V	380/220V 220/110V	220/127V	480/277V 240/139V	380/220V 220/110V	240/120V 208/120V	230/115V	440/254V 220/127V
Motor Starting Capability* kVA	414	389	356	457	454	303	355	332	392
Short Circuit Capacity** %	300	300	300	300	300	300	300	300	300
Reactances: Per Unit									
Xd	2.515	2.707	2.999	2.237	2.470	3.920	3.290	3.550	2.940
X'd	0.123	0.133	0.147	0.110	0.120	0.190	0.160	0.170	0.140
X''d	0.074	0.080	0.088	0.066	0.073	0.116	0.097	0.105	0.087

Reactances shown are applicable to standby ratings.

* Based on 30% voltage dip.

** With optional Permanent Magnet generator or AREP excitation.

Alternator Technical Data

Physical Data	
Manufacturer:	OLYMPIAN
Model:	LL5014F
No. of Bearings:	1
Insulation Class:	H
Winding Pitch - Code:	2/3 - 6
Wires:	12
Ingress Protection Rating:	IP23
Excitation System:	SHUNT
AVR Model:	R450

Operating Data	
Overspeed: RPM	2250
Voltage Regulation (steady state) (%):	+/- 0.5
Wave Form NEMA = TIF:	50
Wave Form IEC = THF:	2.0%
Total Harmonic Content LL/LN:	4.0%
Radio Interference:	Suppression is in line with European Standard EN61000-6
Radiant Heat: kW (Btu/min)	
-50 Hz:	13.2 (751)
-60 Hz:	14.0 (796)

Consult your Olympian representative for more information

Technical Data

3 Phase Ratings and Performance at 50 Hz, 1500 RPM

Voltage	Prime		Standby	
	kVA	kW	kVA	kW
415/240V	180.0	144.0	200.0	160.0
400/230V	180.0	144.0	200.0	160.0
380/220V	180.0	144.0	200.0	160.0
230/115V	180.0	144.0	200.0	160.0
220/127V	180.0	144.0	200.0	160.0
220/110V	180.0	144.0	200.0	160.0
200/115V	180.0	144.0	200.0	160.0

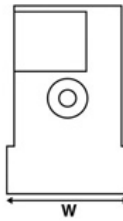
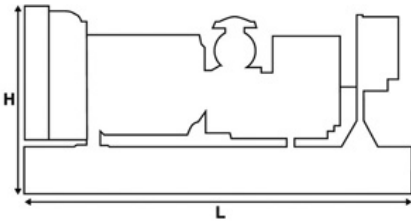
3 Phase Ratings and Performance at 60 Hz, 1800 RPM

Voltage	Prime		Standby	
	kVA	kW	kVA	kW
480/277V	196.9	157.5	218.8	175.0
220/127V	196.9	157.5	218.8	175.0
380/220V	196.5	157.2	217.6	174.1
240/120V	196.9	157.5	218.8	175.0
230/115V	196.9	157.5	218.8	175.0
440/254V	196.9	157.5	218.8	175.0
220/110V	196.5	157.2	217.6	174.1
208/120V	196.9	157.5	218.8	175.0
240/139V	196.9	157.5	218.8	175.0

Weights & Dimensions

Weights: kg (lb)	
Net (+ lube oil)	1731 (3816)
Wet (+ lube oil & coolant)	1758 (3876)
Fuel, lube oil & coolant	2112 (4656)

Dimensions: mm (in)	
Length	2500 (98.4)
Width	1320 (52.0)
Height	1626 (64.0)



Note: General configuration not to be used for installation. See general dimension drawings for detail.

Definitions

Standby Rating

These ratings are applicable for supplying continuous electrical power (at variable load) in the event of a utility power failure. No overload is permitted on these ratings. The alternator on this model is peak continuous rated (as defined in ISO 8528-3).

Prime Rating

These ratings are applicable for supplying continuous electrical power (at variable load) in lieu of commercially purchased power. There is no limitation to the annual hours of operation and this model can supply 10% overload power for 1 hour in 12 hours.

Standard Reference Conditions

Note: Standard reference conditions 25°C (77°F) air inlet temp, 100m (328ft) A.S.L. 30% relative humidity. Fuel consumption data at full load with diesel fuel with specific gravity of 0.85 and conforming to BS2869: 1998, Class A2.

General Data

Documents

A full set of operation and maintenance manuals and circuit wiring diagrams.

Quality Standards

BS4999, BS5000, BSEN60034, BSEN61000, IEC60034.

Warranty

All equipment carries full manufacturer's warranty.

Information contained in this publication may be considered confidential.

Discretion is recommended when distributing.

Materials and specifications are subject to change without notice.

CAT, CATERPILLAR, their respective logos, OLYMPIAN, "Caterpillar Yellow," the "Power Edge" trade dress as well as corporate and product identity used herein, are trademarks of Caterpillar and may not be used without permission.

www.Cat-ElectricPower.com

Market: International
LEHF0114-02 (09-10)

© 2010 Caterpillar
All rights reserved.
Printed in U.S.A.