

BALDOR • RELIANCE

Customer information packet

JMEWDM3711T

10HP, 3450RPM, 3PH, 60HZ, 215JM, 3736M, TEFC, F

Class - None

Division - Not Applicable

Specifications

Enclosure	TEFC
Frame	215JM
Frame Material	Steel
Frequency	60.00 Hz
Haz Area Class and Group	None
Haz Area Division	Not Applicable
Motor Letter Type	Three Phase
Output @ Frequency	10.000 HP @ 60 HZ
Phase	3
Synchronous Speed @ Frequency	3600 RPM @ 60 HZ
Voltage @ Frequency	208.0 V @ 60 HZ 230.0 V @ 60 HZ 460.0 V @ 60 HZ
Agency Approvals	UR CSA CSA EEV
Ambient Temperature	40 °C
Auxillary Box	No Auxillary Box
Auxillary Box Lead Termination	None
Base Indicator	Rigid
Bearing Grease Type	Polyrex EM (-20F +300F)
Blower	None
Current @ Voltage	24.000 A @ 208.0 V 21.600 A @ 230.0 V 10.800 A @ 460.0 V
Design Code	B
Drip Cover	No Drip Cover
Duty Rating	CONT
Efficiency @ 100% Load	90.2 %
Electrically Isolated Bearing	Not Electrically Isolated
Feedback Device	NO FEEDBACK
Front Face Code	Standard

Part detail

Revision	Q
Type	AC
Mech. spec.	37H883
Base	
Status	PRD/A
Elec. spec.	37WGR697
Layout	37LYH883
Eff. date	02-14-2024
CD Diagram	CD0005
Poles	02
Leads	9#14
Proprietary	False
Created date	12-04-2014

Front Shaft Indicator	None
Heater Indicator	No Heater
High Voltage Full Load Amps	10.8 a
Insulation Class	F
Inverter Code	Inverter Ready
KVA Code	H
Lifting Lugs	Standard Lifting Lugs
Locked Bearing Indicator	Locked Bearing
Motor Lead Exit	Ko Box
Motor Lead Quantity/Wire Size	9 @ 14 AWG
Motor Lead Termination	Flying Leads
Motor Standards	NEMA
Motor Type	3736M
Mounting Arrangement	F1
Number of Poles	2
Overall Length	20.91 IN
Power Factor	96
Product Family	Wash Down
Pulley End Bearing Type	Sealed Bearing
Pulley Face Code	C-Face
Pulley Shaft Indicator	Tapped & Key
Rodent Screen	None
Service Factor	1.15
Shaft Diameter	0.875 IN
Shaft Extension Location	Pulley End
Shaft Ground Indicator	No Shaft Grounding
Shaft Rotation	Reversible
Shaft Slinger Indicator	Shaft Slinger
Speed	3450 rpm
Speed Code	Single Speed
Starting Method	Direct on line
Thermal Device - Bearing	None
Thermal Device - Winding	None
Vibration Sensor Indicator	No Vibration Sensor

Winding Thermal 1	None
Winding Thermal 2	None

Nameplate

NP1669L									
CAT.NO.	JMEWDM3711T								
SPEC.	37H883R697G1								
HP	10								
VOLTS	230/460								
AMP	21.6/10.8								
RPM	3450								
FRAME	215JM		HZ	60		PH	3		
SER.F.	1.15	CODE	H	DES	B	CLASS	F		
NEMA-NOM-EFF	90.2	PF	96						
RATING	40C AMB-CONT								
CC	010A								
DE	6309		ODE	6206					
ENCL	TEFC	SN							
BLANK	20:1CT, 20:1VT, 1.00SF								

AC Induction Motor Performance Data

Record # 48426

Typical performance - not guaranteed values

Winding: 37WGR697-R001		Type: 3736M		Enclosure: TEFC	
Nameplate Data			460 V, 60 Hz: High Voltage Connection		
Rated Output (HP)	10	Full Load Torque	15.1 LB-FT		
Volts	230/460	Start Configuration	direct on line		
Full Load Amps	21.6/10.8	Breakdown Torque	58.2 LB-FT		
R.P.M.	3450	Pull-up Torque	24.1 LB-FT		
Hz	60	Locked-rotor Torque	33.7 LB-FT		
NEMA Design Code	B	Starting Current	81.7 A		
Service Factor (S.F.)	1.15	No-load Current	2.59 A		
NEMA Nom. Eff.	90.2	Line-line Res. @ 25°C	1.03 Ω		
Rating - Duty	40C AMB-CONT	Temp. Rise @ Rated Load	59°C		
S.F. Amps		Temp. Rise @ S.F. Load	74°C		
		Locked-rotor Power Factor	32.3		
		Rotor inertia	0.329 lb-ft ²		

Load Characteristics 460 V, 60 Hz, 10 HP

% of Rated Load	25	50	75	100	125	150	S.F.
Power Factor	74	91	94	96	96	94	96
Efficiency	87	91	91.3	90.6	89.9	88.3	90.2
Speed	3569	3542	3512	3480	3447	3408	3460
Line amperes	3.73	5.77	8.25	10.8	13.5	16.8	12.4

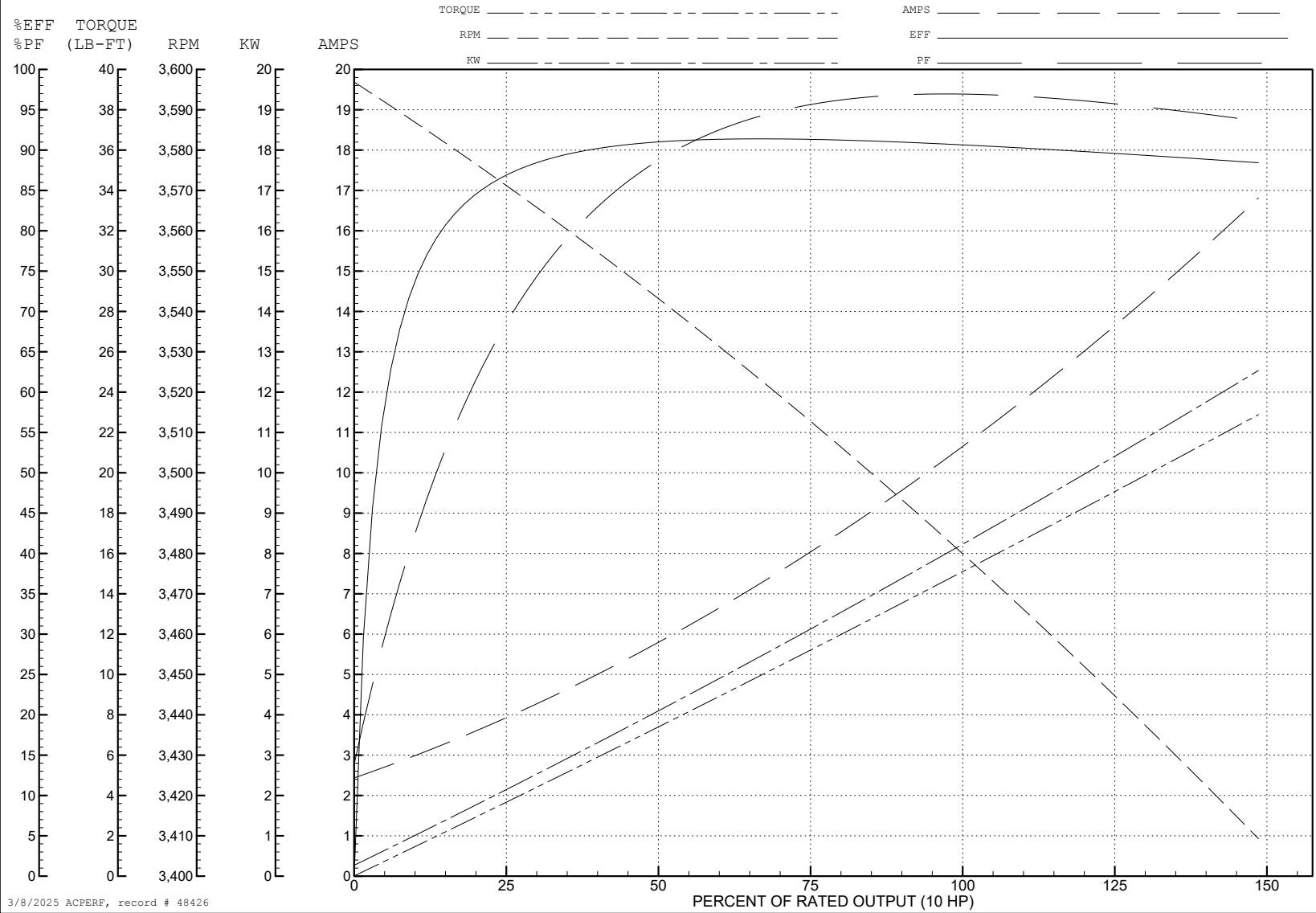
ABB Motors and Mechanical Inc.

WINDING # 37WGR697

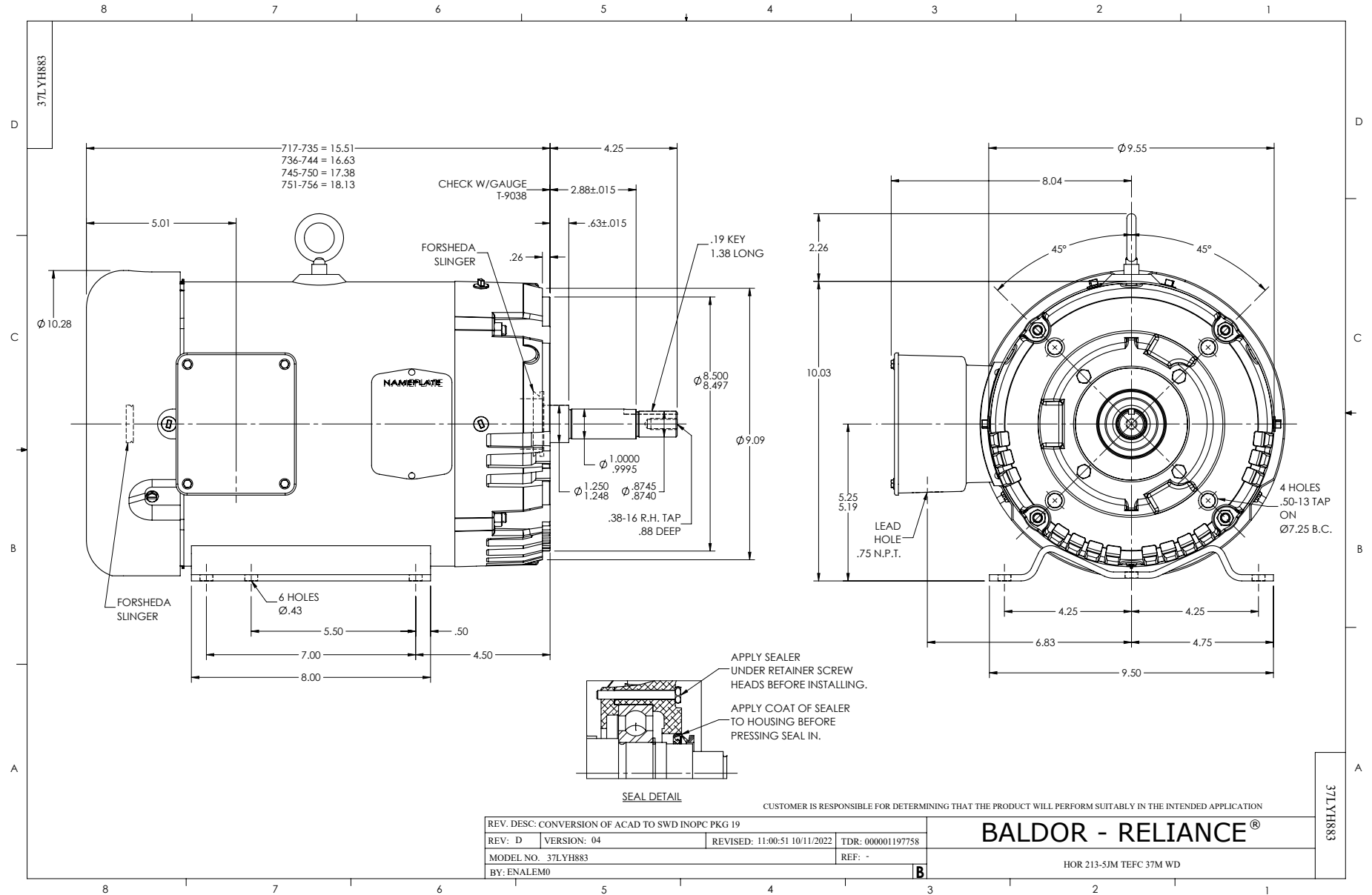
Typical performance - not guaranteed values.

10 HP 3 PH 60 HZ 3450 RPM 460 V 3736M

TORQUES (LB-FT): PO=58.2 PU=24.1 LR=33.7 LRA=81.7



3/8/2025 ACPERF, record # 48426



CD0005



LOW VOLTAGE
(2Y)



LINE

HIGH VOLTAGE
(1Y)



LINE

NOTES:

1. INTERCHANGE ANY TWO LINE LEADS TO REVERSE ROTATION.
2. OPTIONAL THERMOSTATS ARE PROVIDED WHEN SPECIFIED.
3. ACTUAL NUMBER OF INTERNAL PARALLEL CIRCUITS MAY BE A MULTIPLE OF THOSE SHOWN ABOVE.
4. LEAD COLORS ARE OPTIONAL. LEADS MUST ALWAYS BE NUMBERED AS SHOWN.

CD0005

REV. DESC: REVISE TO SHOW OPTIONAL COLORS			
REV. LTR: E	BY: JLP	REVISED: 01/19/99 10:15	TDR: 0171435
S00000		FILE: AAA00005140	MDL: -
		MTL: -	

BALDOR ELECTRIC Co.

3PH, DV, 9 LEADS